



text: *dan shaw*
photography: *elizabeth felicella*

the heart of the matter

Marie Aiello and Paul Boardman get in touch with the 1950's heritage of their house in Bronxville, New York



Previous spread: Marie Aiello Design Studio's namesake principal and Carvas Collection principal Paul Boardman live in Bronxville, New York, in a 1950's house where a David Weeks chandelier now hangs in the foyer. An original composite-stone wall serves as a backdrop for a sideboard by Edward Wormley and a photograph by Tom Hunter.

Top: The living area's mid-century furniture includes a pair of Paul McCobb armchairs and a Wormley sofa, while the Costa Rican hardwood cocktail table and cowhide rug are custom.

Bottom: Boardman added the pitched roof and the brise soleil.

Opposite top: Painted lally columns separate the living area from the library's 1930's piano, viscose-covered lounge chairs, custom leather rug, and original Douglas fir bookcases, updated with back-painted glass. **Opposite bottom:** A custom slate-topped table and 1960's chairs by Helge Sibast furnish the dining pavilion.

When you walk into Marie Aiello and Paul Boardman's freshly decorated house, you immediately think how lucky this designer-architect couple were to find such a well-preserved example of mid-century modernism in the New York suburb of Bronxville—chockablock as it is with late 19th-century Tudor-style houses. After a short conversation, however, you realize that the pair made their own luck. "The house had an interesting spirit, but it was a sorry sight when we first saw it," Boardman says. Aiello adds, "I was nervous about how we were going to save it."

As she explains, the house was inspired by the Case Study Houses of her native California and completed by Frederick G. Frost, Architects, circa 1953. Frederick G. Frost himself lived there for a time before selling

to Christ Church Bronxville, which turned the structure into an improbably chic rectory. When Aiello and Boardman first toured the 4,900-square-foot interior decades later, though, its good bones were obscured by jalousie windows, dark cedar paneling, and black vinyl floors.

The house needed more than cosmetic work, but the couple took care to ensure that the result of their efforts looked like a house untouched by the last half century. "You don't know what is from the '50's and what is from today," Aiello says with justifiable pride. Boardman, who practices under the name Carvas Collection, respected the integrity of the architecture while nonetheless improving on it. "We changed the roofline significantly," he says. "We made three-dimensional changes,

but it couldn't feel patched together. We had to address the lack of volumetric interest."

A wide screened porch, which had interrupted the southern window wall, made way for a bigger, fan-shape glassed-in dining pavilion embraced by the garden. "There's an Asian vibe to this house, a sense of transparency, and I thought a Japanese fan shape would be a nice gesture," Boardman says. In the same Eastern spirit, he and Aiello replaced a planter beneath the foyer's open staircase with a gurgling fountain. Of the shoji screens that used to run through the living area, however, there remains only a memento mori, four worn ceiling tracks.

It was never questioned that the freestanding fireplace would stay, never mind that its massive copper



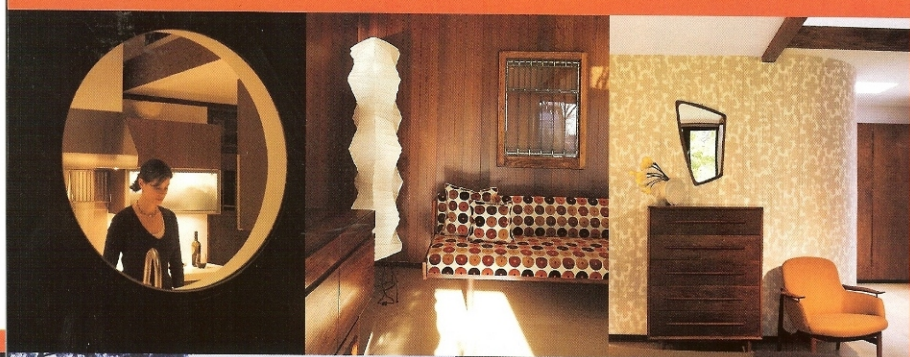
hood could have come right out of an old *Sunset* magazine devoted to chalets. "It's iconic and eccentric, and I love things like that," Boardman says. "My biggest challenge was to make it function, so it didn't smoke out the house. Then we dusted it off, polished it, and wrapped it up in foam during construction."

Marie Aiello Design Studio's tasks were to decorate around the fireplace without condescending to it, to organize the open spaces on all four sides, and to warm the interior without overwhelming the architecture. It's the furniture program that makes the house so comfortable for both entertaining and family life. (Board-

man has two daughters from a previous marriage.) Using seating, tables, and rugs, Aiello defined virtual rooms, all of which have names.

"I call this the formal dining room," she says, pointing to the pavilion's round slate-topped table and vintage rosewood T-back chairs. The informal dining area, meanwhile, flaunts a large oval Eero Saarinen table and Norman Cherner seating.

The library centers on a pair of squared-off striped lounge chairs facing each other on a leather rug, set in front of a wall of original Douglas fir bookcases. "Adding the white glass behind lightened them up," she notes. A 1930's baby grand piano



provides a transition between the library and the den, which has a Danish modern teak table with nesting chairs on a round sheepskin rug. The living area's Edward Wormley sofa faces two Paul McCobb armchairs on a patchwork cowhide rug.

Husband applauds wife: "It was not easy to define the furniture program." While connecting the large area's components was crucial, he continues, "There are spaces where you can curl up and read a book by yourself."

Although the paneling looks original, 40 percent of it is new. "Marie and I came up with a custom stain with a reddish undertone that's just

perfect," Boardman says. "We had six guys here sanding for two whole weeks." Opening the house to the outside, he replaced the jalousie windows with steel-framed ones that "keep the elegant proportion of the sash," he explains.

The synchronicity of the couple's sensibilities is evident from how each approached the wall of windows in the family room. On the exterior, Boardman added a brise-soleil to diffuse the morning sun and create a vertical contrast to the house's horizontal profile. Inside, Aiello hung sheer linen panels on eight sliding tracks to allow multiple configurations. The panels keep the neighbors from "watching

Top, from left: Marie Aiello glimpsed through the kitchen's new pass-through. A Frank Lloyd Wright window above a Hans Wegner daybed in the den. A Danish 1950's mirror, an American vintage dresser, and Finn Juhl's 1953 armchairs in the master bedroom. **Center:** Boardman replaced jalousie windows with custom steel-framed sash windows. **Bottom, from left:** The informal dining area's Eero Saarinen table and Norman Cherner chairs beneath Johannes Girardon's photograph. The living area's copper fireplace hood, restored and reengineered. Vintage rosewood cubes stacked in the family room.



us in our pajamas," she says, but still let the light in.

In the master bedroom, the essence of simplicity, the beige linen curtains can stay open most of the time, since the view is of the garden. When they are, the trompe l'oeil wallpaper makes it seem as if the trees are casting shadows on the walls, giving the room a romantic, Garden of Eden quality.

Aiello's favorite thing in the house is not visible to guests: the deep, shallow drawers that Frost built into the hall closets. "I absolutely love them," she says. "It's where I keep all my linens." In his day, however, the storage was for blueprints. >>

PROJECT TEAM
MARIA LADDONADA: MARIE AIELLO DESIGN STUDIO
MAGGIE MARRIONE ARCHITECTS: ARCHITECT OF RECORD
JONATHAN LANDSCAPING: LANDSCAPING CONSULTANT
POLAR AIR CONDITIONING: MECHANICAL SYSTEMS INT.: GENERAL CONTRACTOR

PRODUCT SOURCES

FRONT FRONT THROUGH RALPH PUCCI INTERIORS: CHAIRS; ER FOTER: HERMAN MILLER: CHAIR; THROUGH BAXTER & LESBETHEN: SIDEBOARD (FOYER); SIDE TABLES (LIVING AREA); CURBS (LIBRARY; FAMILY ROOM); CHAIRS (PATIO/LOUN); SIDEBOARD, DAY-BED (DEN); MIRROR, DRESSER, CHAIRS, DESK (BEDROOM); **INTERFACELOR**: CARPET TILE (FOYER, KITCHEN); THROUGH HAMPTONS ANTIQUE GALLERIES: CHAIRS (LIVING AREA); THROUGH NORD MODERN: SOFA; THROUGH PIECES: PILLOWS; MADARA DESIGNS: CUSTOM COCKTAIL TABLE; RUG COMPANY: CUSTOM RUG; BERGAMO FABRICS: PILLOW FABRIC (LIVING AREA); STROMPER CHAIR FABRIC (LIBRARY); MARTIN PATRICK RYAN: CUSTOM RUG (LIBRARY); NIENKAMPER: CLUB CHAIRS; CHRISTOPHER HYLAND: SOLID CHAIR FABRIC (LIBRARY); DAVIDO FABRIC (DEN); DONGHIA: SIDE CHAIR (LIBRARY); WALL PAPER (BEDROOM); AMERIFAB: CUSTOM TABLE (PATIO/LOUN); OZENI & COMPANY: LANTERNS (DEN, BEDROOM); KNOXELL: TABLE (DINING AREA); CHERNER CHAIR COMPANY: SEATING THROUGH NYEYEN & NYEYEN MODERNE: CHAIR (FAMILY ROOM); POGGERSPORTEL: CUSTOM CABINETRY (KITCHEN); DUPONT: COUNTER MATERIAL; WOLF: RANGE HANS-GROHE: SINK; FITTINGS; DESIGN WITHIN REACH: STOOLS (KITCHEN); BED (BEDROOM); BOLMA: CUSTOM RUG (BEDROOM); **THROUGHOUT** CRITALL WINDOWS: CUSTOM WINDOWS; STONE SOURCE: FLOOR TILE; LIGHTOLIER: CAN LIGHTS.



Opposite top: The paneling mixes new and original cedar, sanded and stained. Flooring throughout the ground level is porcelain tile. **Opposite bottom:** Corian counters top cedar-veneered kitchen cabinetry.

Above: In the master bedroom, a bed by Niels Bendtsen meets a Danish 1960's oak dresser, a 1950's teak desk, and a vintage Saavinen chair.

MARIE AIELLO DESIGN STUDIO

"The Heart of the Matter,"
page 154

PRINCIPAL:

Marie Aiello, *ASID*.

COMPLETED PROJECTS:

Johnson & Johnson corporate apartment in New York; houses in Armonk and Water Mill, New York; Jao restaurant and Jetlag Boutique on St. Bart's, French West Indies.

CURRENT PROJECTS:

Apartments in New York; houses in Rowayton and Westport, Connecticut.

HONORS: AIA Honor Award.

STUDY: Aiello graduated from the New York School of Interior Design.

MEDITATION: She has a yoga studio at home.

340 East 77th Street, 3rd Floor, New York, NY 10075; 212-988-1911; ma-ds.com.



CANVAS COLLECTION

"The Heart of the Matter,"
page 154

FOUNDER:

Paul Boardman, *AIA*.

CURRENT PROJECTS:

Canvas Collection showrooms in New York, Miami, Chicago, San Francisco, and Los Angeles; prefab residences in New York, California, and Hawaii.

LYRIC: Boardman rhapsodizes about Marie Aiello, his wife collaborator, wearing a cobalt blue dress.

ATHLETIC: In February, he'll be skiing with daughters Cameron and Brianna in Sun Valley, Idaho.

340 East 77th Street, 4th Floor, New York, NY 10075; 212-988-8292.

DEBORAH BERKE & PARTNERS ARCHITECTS

"Bond, 48 Bond," page 112

PRINCIPAL:

Deborah Berke.

COMPLETED PROJECTS:

Marianne Boesly Gallery and Burton Snowboards in New York; Yale University School of Art and Yale University School of Drama in New Haven; James Chicago hotel; 21c Museum Hotel in Louisville, Kentucky.

CURRENT PROJECTS:

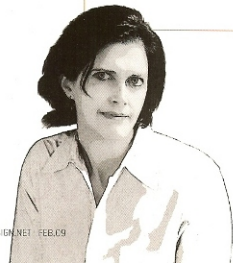
A condominium building in New York; a mixed-use development in Long Island City, New York; a fire station in Lake Buena Vista, Florida; a gallery for MGM Mirage's City Center in Las Vegas.

HONORS: Interior Design Hall of Fame and Best of Year Awards; AIA New York Chapter awards.

MONDAY NIGHT: Berke cuts up with the New Yorker.

SATURDAY NIGHT: She and her husband entertain at their home.

220 Fifth Avenue, New York, NY 10001; 212-229-9211; dberke.com.



TSAO & MCKOWN ARCHITECTS

"Lights, Camera, Action,"
page 120

PARTNER:

Calvin Tsao.

PARTNER:

Zack McKown.

COMPLETED PROJECTS:

William Beaver House in New York; Jianfu Palace Garden Museum and Visitors Center in Beijing; Nai Lert Park hotel in Bangkok.

CURRENT PROJECTS:

A hotel in Miami Beach; Xiqu master plan and Longchi National Forest Park restoration in Duijangan, China; Qingdao IMC Center in China.

HONORS: Interior Design Hall of Fame and Best of Year Awards.

IN: At Seva, Tsao prefers to tuck into the niche in the casual dining room.

OUT: McKown opts for the roof terrace.

20 Vandam Street, 10th Floor, New York, NY 10013; 212-337-3800; tsaomckown.com.



ELLIOTT + ASSOCIATES ARCHITECTS

"Needs No Preamble,"
page 128

PRINCIPAL:

Rand Elliott.

COMPLETED PROJECTS:

Gaylor-Pickens Museum, Ballet Oklahoma, and the snow barn at Will Rogers World Airport, all in Oklahoma City; Pops restaurant in Arcadia, Oklahoma; residences in Oklahoma and Connecticut.

CURRENT PROJECTS:

A house in Wellston, Oklahoma; bathhouses on the Oklahoma River; a competition entry for Skyscraper of the 21st Century in New York.

HONORS: Interior Design Hall of Fame and Best of Year Awards.

LITERATURE: A top read for Elliott was *The Poetics of Space* by Gaston Bachelard.

ART: Among his favorites are works by Antony Gormley and Donald Judd.

35 Harrison Avenue, Oklahoma City, OK 73104; 405-232-9554; e-a-a.com.

EINS:EINS ARCHITEKTEN

"Fast Food Versus
Health Food," page 148

PRINCIPAL:

Julian Hillenkamp.

PRINCIPAL:

Christoph Roselius.

COMPLETED PROJECTS: Syzygy and FischerAppell, Furze, in Hamburg.



Germany; residences in Hamburg and Berlin.

CURRENT PROJECTS:

Alice in Hansenet Internet lounges and GlanzRaum car wash in Hamburg; master plan for Mellrichstadt, Germany.

CURRY-WURST: Hillenkamp takes his with mayonnaise, **CURRY-WURST:** Roselius prefers ketchup.

37 Eimsbütteler Chaussee, 20259 Hamburg, Germany; 49-40-650-466-81; einszeins-architekten.de.

headliners